
Institute for Society, Culture and Environment

~ISCE~

Karen A. Roberto, Ph.D.
Interim Director
kroberto@vt.edu

University-level Comprehensive Research Institute

Mission:

To foster and facilitate creative, interactive, multidisciplinary, and interdisciplinary research and creative efforts in the social sciences, humanities, and arts.

Social and Individual Transformation

- **Focuses on causes and consequences of the increased interdependence of economic, social, political, and institutional systems.**
- **Touches both societal and individual life, extending from public policy to personal identity and including explorations of the constructions of race, ethnicity, class, and gender.**
- **Assists in understanding and addressing critical and emerging issues at the societal and individual levels and contributes toward planning for a sustainable future.**

Thematic Areas

- **Global Issues Initiative (GII)**
- **Human development and behavioral health**
- **Rhetoric, representation, and public humanities**
- **Social complexity and individual risk**
- **Community arts, built environment, & urban formations**

Stakeholders Committee

Sue Ott Rowlands

CLAHS

Lay Nam Chang

COS

Jack Davis

ARCH

Rich Sorenson

PCOB

James Bohland

NCR

Robert Walters

Research Division

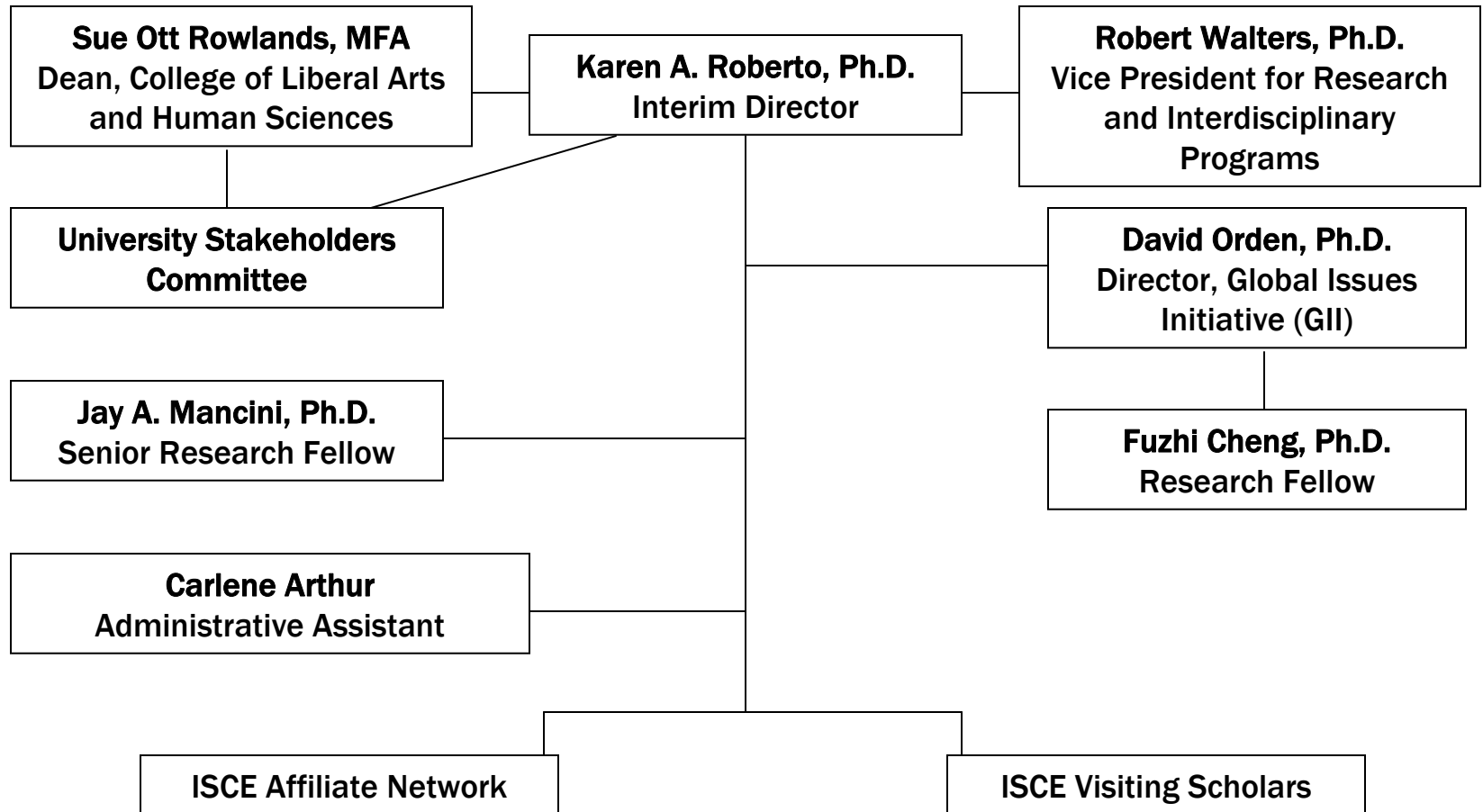
Karen DePauw

Graduate School

Tim Luke

Univ Senior Fellow

Administration



Initiatives and Strategies

Leveraging University funds to increase sponsored research and scholarship in the social sciences, arts and humanities

- **Summer Scholars Program**
- **Interdisciplinary Research Groups**
- **Individual Faculty Requests**
- **New Faculty Start-up Support**
- **Collaboration and Partnerships**

ISCE

237 Wallace Hall

231-7657

kroberto@vt.edu

www.isce.vt.edu
